



EVERYTHING RESIDENTIAL & COMMERCIAL
BUILD ELECTRICAL CONCRETE

(480)798-7060

ERC.BUILD

SALES@ERC.BUILD



AMBIANCE - MOOD - MASTERPIECE

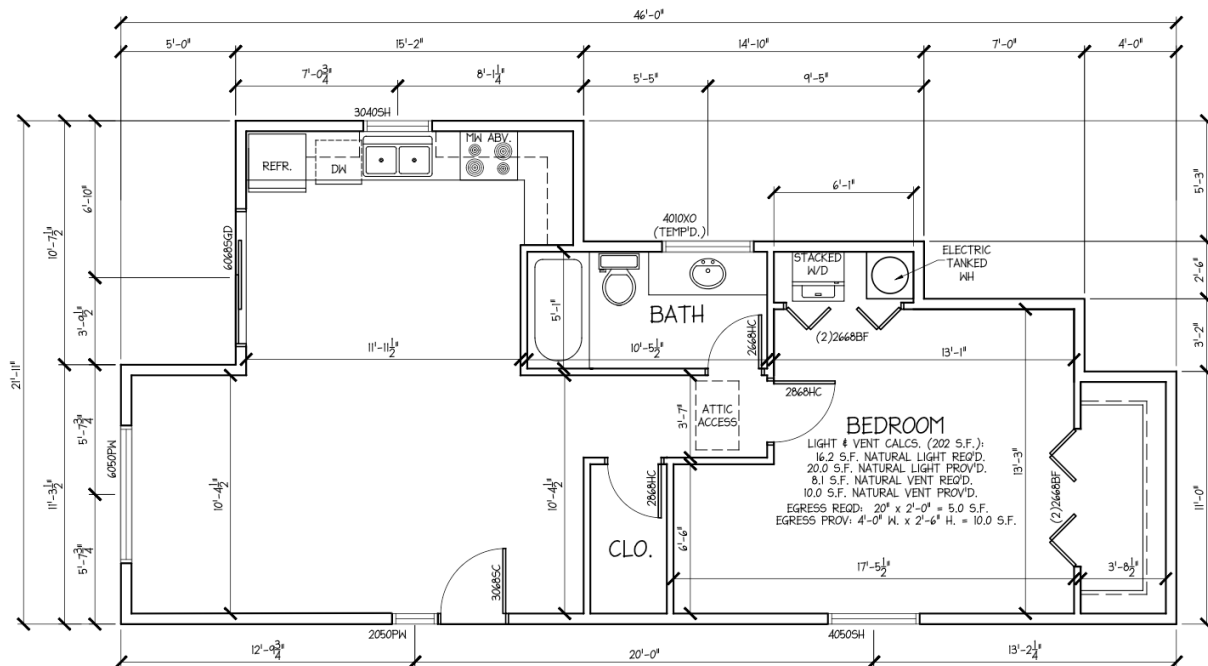
Orange Tree Casita

Turnkey Cost: \$225,400 780 SF

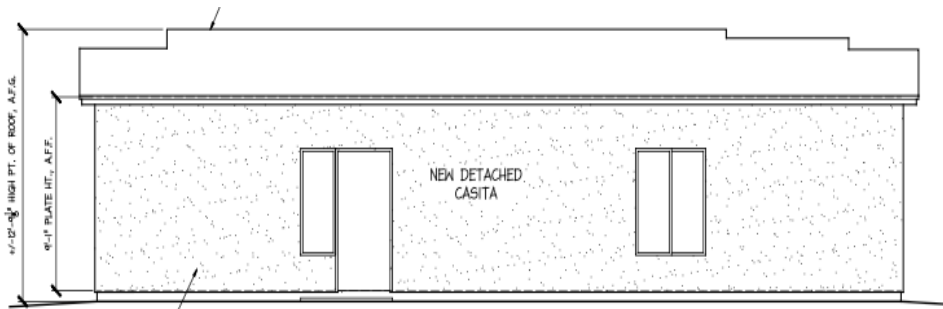
THIS PRICE INCLUDES:

- *400 AMP PANEL UPGRADE
- *PLUMBING AND ELECTRICAL RUNS UP TO 110'
- *CUSTOM CABINET PACKAGE
- *GRANITE COUNTER TOPS
- *ALL APPLIANCES (EXCEPT REFRIDGERATOR)

See complete product list below

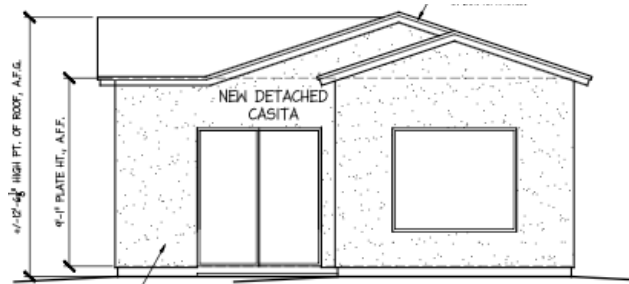


780 S.F.



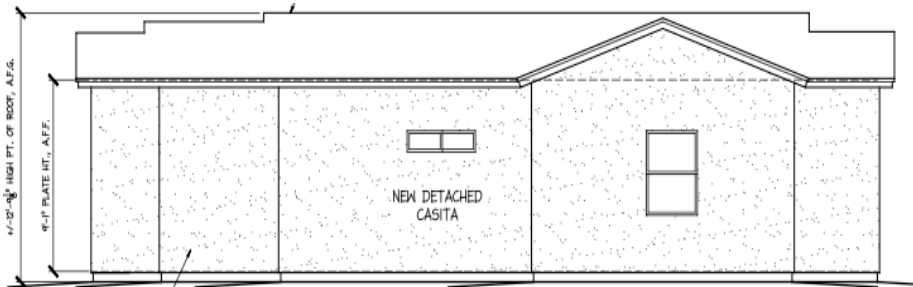
ULTRA-KOTE STUCCO WALL FINISH
(ICC-ESR4171 OR EQUAL) OVER
WATER-RESISTIVE BARRIER OVER 1"
FOAM INSULATION OVER 3/8" OSB
ALL EXTERIOR WALLS

FRONT ELEVATION



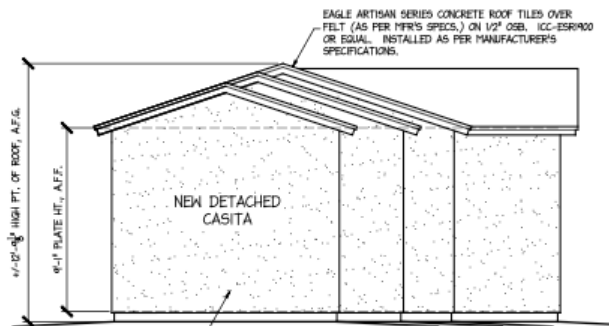
ULTRA-KOTE STUCCO WALL FINISH
(ICC-ESR4171 OR EQUAL) OVER
WATER-RESISTIVE BARRIER OVER 1"
FOAM INSULATION OVER 3/8" OSB
ON WALLS

LEFT ELEVATION



ULTRA-KOTE STUCCO WALL FINISH
(ICC-ESR4171 OR EQUAL) OVER
WATER-RESISTIVE BARRIER OVER 1"
FOAM INSULATION OVER 3/8" OSB
ALL EXTERIOR WALLS

REAR ELEVATION



EAGLE ARTISAN SERIES CONCRETE ROOF TILES OVER
FELT (AS PER MFR'S SPECS.) ON 1/2" OSB. ICC-ESR4900
OR EQUAL. INSTALLED AS PER MANUFACTURER'S
SPECIFICATIONS.

ULTRA-KOTE STUCCO WALL FINISH
(ICC-ESR4171 OR EQUAL) OVER
WATER-RESISTIVE BARRIER OVER 1"
FOAM INSULATION OVER 3/8" OSB
ALL EXTERIOR WALLS

RIGHT ELEVATION



***Cabinet Order**

Luxury Package included:

American Wood mark Leesburg Dura form Collection: Linen, Harbor, Stone, Espresso, Breeze, Drift

Refer to the Orange Tree casita kitchen layout.

Upgrade package available:

Upgrade cabinet package to a custom painted set.

Orange Tree Product Sheet

*Window Order

	Item	Manufacturer	Model Number	Size/Description	Qty
1.)	Window	Solar Industries		4050XO. 48" x 60" Single slider white vinylXO. UPGRADABLE	1
1+		Milgard	V150 Series		
2.)	Window	Solar Industries		3010XO. 36" x 12" Single slider white vinylXO. UPGRADABLE	1
2+		Milgard	V150 Series		
3.)	Window	Solar Industries		2050PW 24" x 60" Single hung slider white vinyl. UPGRADABLE	1
3+		Milgard	V150 Series		
4.)	Window	Solar Industries		6050PW. 72" x 60" Picture window white vinylXO. UPGRADABLE	1
4+		Milgard	V150 Series		
5.)	Window	Solar Industries		3040SH. 36" x 48" Single hung slider white vinyl. UPGRADABLE	1
5+		Milgard	V150 Series		

*Door Order

	Item	Manufacturer	Model Number	Size/Description	Qty
6)	Door	Masonite	38673	32" x 80" 6-panel hollow core left-hand primed	2
7)	Door	Masonite	38673	30" x 80" 6-panel hollow core right hand primed	1
8)	Bi-fold Door	Masonite	16510	30" x 80" Primed 6-panel hollow core primed molded composite closet Bifold	4
9)	Arcadia Door	Ply Gem	580 PD	EXTERIOR 72"x 80" Ply Gem 580 Series White Vinyl Slider XO.	1
10)	Door	Masonite	87168	EXTERIOR 36" x 80" 6 panel right hand primed	1
11)	Door hardware	Kwikset	T405BL15SMTCPK6	Satin nickel interior door handle	5
12)	Door hardware	Kwikset	991TNL 15 SMTCP	EXTERIOR Satin nickel door handle	1

*Product Order:

	Item	Manufacturer	Model number	Size: Width, Depth, Height/ Description: Color	Qty
13)	Toilet	American Standard	726DA101.020	Toilet 18" W x 31" D x 31" H. 1.28 GPF Single flush elongated white toilet	1
14)	Single-Vanity	Glacier Bay	EV30P2-WH	Single- Vanity: 31" W x 30" D x 35" H Single white bath vanity with white cultured marble top	1
15)	Vanity Light	Hampton Bay	NB33307	Vanity Light: brushed nickel	1
16)	Fan	Hampton Bay	52050	Ceiling fan: 52" brushed nickel	2
17)	Sconce	Hampton Bay	G14806-BK	EXTERIOR Lights: Black Sconce	2
18)	Water Heater	Rheem	XE30M06ST45U1	Water Heater: 21" W x 21" D x 38" H. 1-2 persons electric 30-Gal (tanked)	1
19)	Exhaust Fan	Broan-NuTone	696N	50 CFM ceiling wall mount bathroom exhaust	1

20)	Kitchen Faucet	Delta	19824LF-BL	Single hand pulldown sprayer (stainless, chrome, champagne bronze, matte black)	1
21)	Bathroom Faucet	Delta	B2511LF-SSPPU-ECO	4" center set 2-handle faucet (chrome or brushed nickel)	1
22)	Shower/ tub valve with faucet/trim	Delta	144749-BL	Nicoli H20Kinetic Rough Included Single-Handle 5-Spray Tub and Shower Faucet 1.75 GPM in (chrome, champagne bronze, stainless, matte black)	1
23)	Toilet paper holder/ towel ring	Delta	PWD62B-BN-VK	2-piece bath hardware set with toilet paper holder and towel ring in brushed nickel	1
24)	Towel Rack	Delta	PWD24-BN	24" wall mount towel bar in brushed nickel	1
25)	Microwave	GE	JVM316ORFSS	Microwave: 30" W x 16" D x 16.5" H. 1.6 cubic ft., OTR, 300cFm, vented (White, Black, Stainless Steel, Bisque, Fingerprint Resistant Slate)	1
26)	Cooktop	Frigidaire	FFEC302545	Cooktop 31" W x 31" D x 3" H. 4 burners (Black, Stainless Steel, Stainless)	1
26+	Oven	GE	GRF500PVES	Oven: 30" x 28" D x 48" H. 5 Burner electric range. (White, Black, Slate, Stainless Steel)	
27)	Dishwasher	Frigidaire	FDPH4316AS	Dishwasher: 24" W x 25" D x 35" H. (Black, White, Stainless Steel, Black Stainless Steel)	1
28)	Sink	Kraus	KBU32	Kitchen Sink 32" W x 19" D x 8.5" H. Premier Stainless Steel 16 Gauge 32 in. Double Bowl Undermount Kitchen Sink. (Stainless Steel or Satin)	1
29)	Garbage Disposal	InSinkErator	Badger 100	Garbage Disposal: 1/3 HP continuous feed	1
30)	Doorbell	New House	CKIT1	Wired doorbell	1
31)	Mini-Split	Mirage	n/a	2 head mini split.	1
32)	Washer/Dryer Combo	GE	GUD27ESSMWW	76" H x 31" D x 27" W. 3.8 cu. ft. washer 5.9 cu. ft. electric dryer combo (White or Diamond Grey)	1
33)	Recessed Lights	Halo	HLB6099FS1EMWR	HLB Series 6" adjustable CCT Can less IC Rated Dimmable LED Lights	19
34)	Light Switches	Leviton	R72-05601-2WS	Decora 15 amp single-pole switch (White)	19
35)	Dimmer Switches	Lutron	DVCL-153PR-WH	Diva LED+ Dimmer Switch for Dimmable LED and Incandescent Bulbs, 150-Watt/Single-Pole or 3-Way (White)	4
36)	Outlet	Leviton	R52-05325-0WS	Decora 15 amp 125V duplex outlet/receptacle (White)	21

- Variables (Possible Add-ons) – septic, civil engineering, extreme grade correction, power company hookup, and extended electrical and plumbing runs
- Customer is responsible for all permitting and engineering fees
- Customer provides refrigerator



Orange Tree Casita

Upgrade sheet 780 SF

STANDARD PACKAGE

- Windows - Solar industries
- Doors – Masonite hollow core
- Cabinets – American Woodmark “Duraform series”
- Countertop – granite (group 1)
- Flooring –LVP/Carpet (group 1)
- Microwave - GE
- Dishwasher – Frigidaire
- Cooktop - Frigidaire
- Kitchen sink - Kraus
- Bath vanities- Glacier Bay Single
- Toilet – American standard
- HVAC – Mirage, 2 head mini split
- Roofing- Standard tile or shingle
- Tanked water heater

UPGRADED PACKAGE

- ◇ Windows – Milgard
- ◇ Doors – Masonite solid core
- ◇ Cabinets – American Woodmark “Painted series”
- ◇ Countertop – Premium FMV
- ◇ Flooring – Tile, LVP or Carpet
- ◇ Microwave
- ◇ Dishwasher
- ◇ Cooktop/Oven
- ◇ Kitchen sink
- ◇ Bath vanities
- ◇ Toilet
- ◇ HVAC
- ◇ Roofing- Upgrade
- ◇ Tankless water heater